



春雨工廠 股份有限公司
CHUN YU WORKS & CO., LTD.
 www.chunyu.com.tw

春雨集團企業總部

高雄市82063岡山區大寶街100號
 TEL: 886-7-622-4111 FAX: 886-7-621-6697
 http://www.chunyu.com.tw
 E-mail: sales@chunyu.com.tw

台北分公司

台北市10363承德路三段132號
 TEL: 886-2-2592-5161 FAX: 886-2-2595-9912
 E-mail: sales@chunyu.com.tw

春雨(東莞)五金制品有限公司

廣東省東莞市523795大朗鎮松木山永豐管理區
 TEL: 86-769-83310921 FAX: 86-769-83181001/83180094
 http://www.chunyu.com.cn

春雨(東莞)五金製品有限公司(軻爾廠)

遼寧省鞍山市達道灣工業園區達旗街10號
 TEL: 86-412-8242299 FAX: 86-412-6365552

春雨(鞍山)五金制品有限公司

遼寧省鞍山市達道灣工業區汽摩配產業園
 TEL: 86-412-7265999 FAX: 86-412-7265599

上海友鉅五金制品有限公司

上海市200949寶山區羅涇鎮鎮民營路5號
 TEL: 86-21-66877022 FAX: 86-21-66877012
 http://www.uchee.com.cn
 E-mail: sales@sh-uchee.com

春雨工廠美國公司

3534 Philadelphia St., Chino, CA91710, US.
 TEL: 01-909-627-7070 FAX: 01-909-627-6255
 http://www.cywusa.com

印尼雄獅工業股份有限公司

Jl. Rawa Bali / No.8 Industrial Estate Pulogadung,
 Jakarta 13920, Indonesia.
 TEL: 62-21-4602888 FAX: 62-21-4602887

授權製造

昱擎科技股份有限公司

高雄市80457鼓山區明誠四路6號2F
 TEL: 886-7-5527908 FAX: 886-7-5527937
 http://www.gpip.com.tw



春雨工廠 股份有限公司
CHUN YU WORKS & CO., LTD.
 www.chunyu.com.tw

LOCKING SYSTEM PARTS

防鬆螺絲組件



GROUP HEADQUARTER

100, Tapao St., Kangshan Dist, Kaohsiung 82063, Taiwan.
 TEL: 886-7-622-4111 FAX: 886-7-621-6697
 http://www.chunyu.com.tw
 E-mail: sales@chunyu.com.tw

TAIPEI BRANCH

132, Chen Teh Rd., Sec. 3, Taipei 10363, Taiwan.
 TEL: 886-2-2592-5161 FAX: 886-2-2595-9912
 E-mail: sales@chunyu.com.tw

CHUN YU (DONGGUAN) METAL PRODUCTS CO., LTD.

Yun Fong Industry Park, Song Mu Shan Section, Dalang,
 Dongguan 523795, Guangdong, China.
 TEL: 86-769-83310921 FAX: 86-769-83181001/83180094
 http://www.chunyu.com.cn

CHUN YU (DONGGUAN) METAL PRODUCTS CO., LTD.

ANSHAN BRANCH
 10, Dapi Street Dadaowan Industrial Park, Anshan City, Liaoning, China.
 TEL: 86-412-8242299 FAX: 86-412-6365552

CHUN YU (ANSHAN) METAL PRODUCTS CO., LTD.

Dadaowan Automobile Accessories Industrial Park, Anshan City,
 Liaoning Province, China.
 TEL: 86-412-7265999 FAX: 86-412-7265599

SHANGHAI UCHEE HARDWARE PRODUCTS CO., LTD.

No.5, Mingying Rd., Luojing Town, Baoshan District,
 Shanghai City 200949, China.
 TEL: 86-21-66877022 FAX: 86-21-66877012
 http://www.uchee.com.cn
 E-mail: sales@sh-uchee.com

CHUN YU WORKS (U.S.A.) INC.

3534 Philadelphia St., Chino, CA91710, US.
 TEL: 01-909-627-7070 FAX: 01-909-627-6255
 http://www.cywusa.com

PT. MOONLION INDUSTRIES INDONESIA

Jl. Rawa Bali / No.8 Industrial Estate Pulogadung,
 Jakarta 13920, Indonesia.
 TEL: 62-21-4602888 FAX: 62-21-4602887

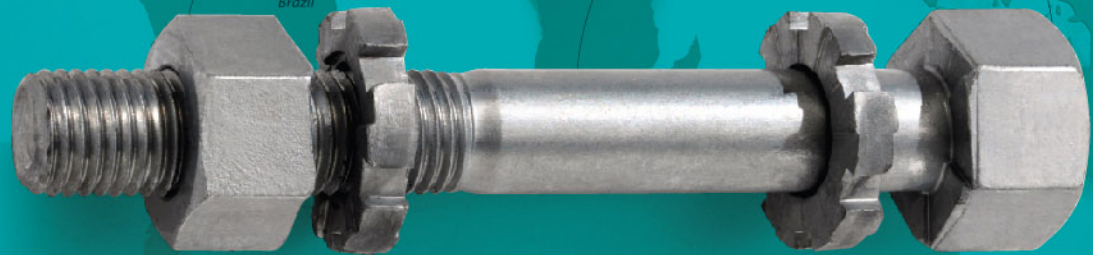
Authorized to manufacture

GEO-PROTECTOR TECH.CO., LTD.

2F, No.6, Mingcheng 4th Rd., Gushan Dist.,
 Kaohsiung City 80457, Taiwan (R.O.C)
 TEL: 886-7-5527908 FAX: 886-7-5527937
 http://www.gpip.com.tw

CHUN YU MAKES THE WORLD CLOSER

春雨讓世界更緊密



SERVING SOCIETY WITH THE BEST QUALITY

以最好的品質來服務社會



公司簡介

春雨集團致力於各式螺絲、螺帽和攻牙螺絲、球化線材的製作，從機動車輛到航太、建築到重工、甚至軌道系統運用組件製造，配合高超的技術和嚴密的製程品管，提供您所需要的各種製品與服務。



我們優良的製品品質，確保自完整的產品設計及全面品保系統和精密的檢驗儀器。從原料的入廠到製成品的包裝付運，都建立一貫作業的品質系統供各單位據以執行。春雨並通過國際ISO、TS、AS、EN 歐盟建築產品指令、A2LA美國實驗室品質認證和IRIS國際鐵道系統認證合格，這是春雨自身對品質的要求與實現對客戶的承諾與保證。

COMPANY PROFILE

Chun Yu devoted itself to manufacturing bolts, nuts, self-tapping screws, annealed wire and rods, products from automotive to aerospace, construction to heavy industry, and the system components package for railway industry together with superior technique and precise quality control to provide wide range of products and services.

Our total quality control system works throughout the whole production process from raw materials till finished goods. Furthermore, Chun Yu possessed of wide range of certifications approved by ISO, TS, AS, EN (CE Marking), A2LA (American Association for Laboratory Accreditation) and IRIS (International Railway Industry Standard) certified. We believe that successfully maintain stable and superior quality goods will generate success for both our customers and Chun Yu over the long term.



多項國際認證 INTERNATIONAL CERTIFICATES

品質保證

- 螺絲螺帽雙功能自動分析系統
- 分光儀
- 100噸萬能試驗機
- 3D量測儀
- 2D量測儀
- 維克氏硬度試驗機

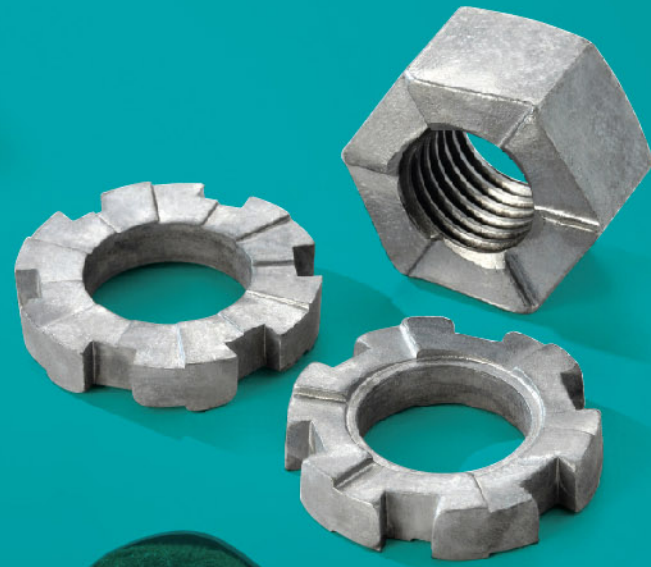
QUALITY ASSURANCE

- Multifunction nut and bolt torque / Tension testing system
- Optical emission spectrometer
- Universal Testing Machine(100T)
- 3D measure machine
- 2D measure machine
- Vickers Hardness Tester



EVER FASTEN LOCKING SYSTEM

永鋼防鬆螺絲組件

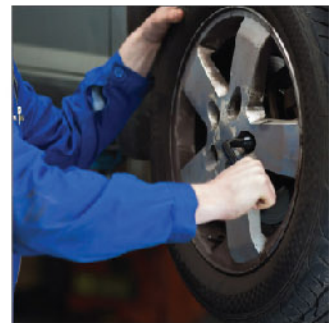


EVER FASTEN LOCKING SYSTEM

When the lock nut is assembled with the lock washer or the lock bolt is assembled with the lock washer, the teeth between the nut or bolt will lock together with the washer. When the reserve force is applied on the nut or bolt, the slope surface between the teeth will push the washer down into the fastening surface. This mechanism will lock the bolt and nut, and will not loosen.

防鬆產品系統

利用螺帽與墊片，螺栓與墊片組合一起，經精密設計製造後，使螺帽或螺栓上之數道齒面與墊圈上之齒相扣合。若螺帽或螺栓因震動或其他外力等反向力欲鬆脫時，則相扣合之齒面會形成高低落差，旋開鬆脫力量愈大，形成之高低落差愈大，扣合之齒面會吃合的更緊密。此時反向機械力無法超越相對齒面最高接觸點的抵抗力，藉此達到不鬆脫的功效。



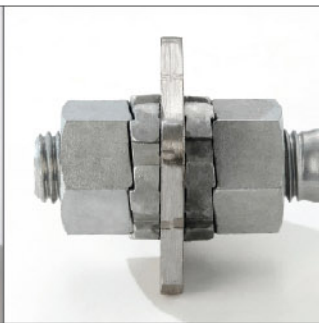
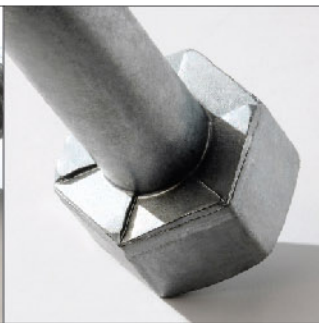
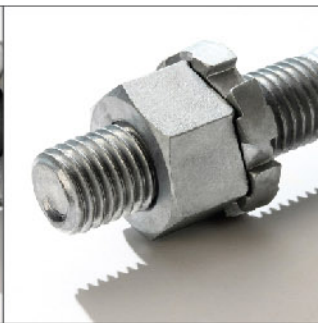
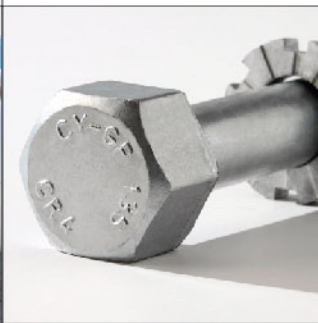
防鬆
Anit-Loosen



防盜
Burglarproof



防災
Prevention of disaster



使用範圍

我們提供扣件的安全附加價值，舉凡大型工程領域，包括航空、國防、船舶、防震結構、橋樑、鐵道、鋼結構、車輛、醫療、運動器材、鑽探、機械、電力設備、號誌路燈、輸送管線及3C家電...等等，有高緊固安全需求，就會需要這樣的防鬆設計。

APPLICATIONS

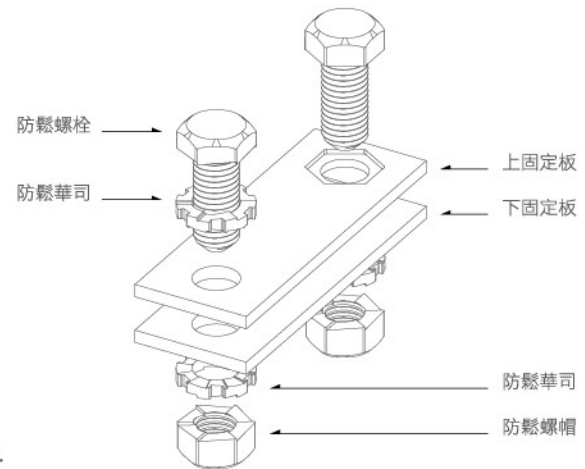
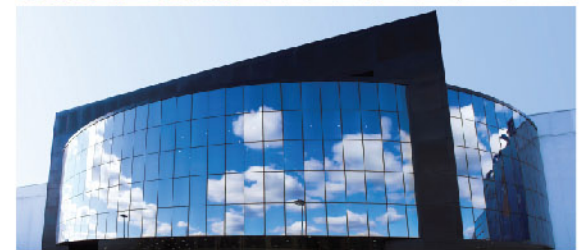
The Ever fasten locking system's safety design finds many industrial applications such as heavy industry, aerospace, defense, sea vessels, anti-vibration systems, bridges, railroads, steel construction, automobiles, medical devices, athletics equipment, well drilling, machines, electric power, signal lights, piping, 3C appliances and more... The demand for high security fasteners is our expertise.

永鋼防鬆螺絲產品特性

- 相同軸力時，具有更高的抗震防鬆能力
- 近2倍的抗旋脫力（旋脫扭力遠大於旋緊扭力）
- 防偷 - 防人為破壞，需特殊工具才可解開

CHARACTERISTICS OF THE EVER FASTEN LOCKING SYSTEM

- Better anti-vibration ability with the same axial force.
- Unfastening torque is over two times of fastening torque.
- Anti-thief and anti-loosening. Only untightened with specially designed tools.



INSTALLATION TORQUE TABLE

安裝扭力表

永鋼防鬆組件建議的安裝力矩(N-M)
Ever Fasten Locking System Recommend Installation Torque (N-M)

螺栓 Bolt	性能等級8.8 Class 8.8	性能等級10.9 Class 10.9	性能等級12.9 Class 12.9
螺栓規格 Size	安裝力矩 Installation Torque	安裝力矩 Installation Torque	安裝力矩 Installation Torque
M8x1.25	17-25	24-34	27-39
M10x1.5	31-44	45-64	55-79
M12x1.75	55-79	79-113	96-137
M14x2	90-128	127-181	151-216
M16x2	137-196	187-267	224-320
M18x2.5	182-260	256-366	307-439
M20x2.5	261-373	368-525	440-628
M22x2.5	350-500	498-711	597-853
M24x3	447-638	632-903	755-1079
M27x3	673-961	948-1354	1147-1638
M30x3.5	921-1315	1291-1844	1552-2217
M36x4	1257-1795	1772-2531	2115-3021

★其他規格可客製化生產
附註

1. 防鬆墊片設計的表面硬度，需明顯大於被鎖物的表面硬度，以確保防鬆效果。
2. 墊片與被鎖物之間表面摩擦係數愈大，扭矩係數會愈大，安裝力矩需加大，以確保達到必要的緊固軸力。
($T=K \times D \times P$) (T: 鎖緊力矩、K: 扭矩係數、D: 直徑、P: 緊固軸力)
3. 正確鎖固後，除防鬆外，可抵抗接近2倍的旋出扭力，減少人為破壞。

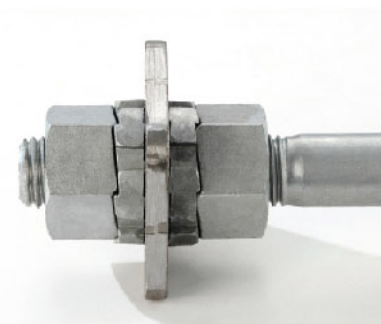
★Other sizes can be customized.

Remark:

- A. Locking Washer Surface Hardness Must Obvious higher than Base Material to Insure the Performance.
- B. The Higher Coefficient of Friction Between Locking Washer and Base Material, The Higher Installation Torque to Insure Necessary Fastening Axial Force Applied. Applied Fastening Axial Force ($T=K \times D \times P$) (T: Torque, K: Coefficient of Torque, D: Diameter, P: Tighten Axial Force).
- C. After Tighten, the Resistance of Loosing Force is Twice of the Tighten Force.

APPLICATION CATEGORY

應用類別範例



本產品使用於鐵路、汽車、橋樑及建築上
Such product are widely used among the rail, automotive, bridges and constructions.

橋樑
Bridges



車輛
Automobile / Vehicles

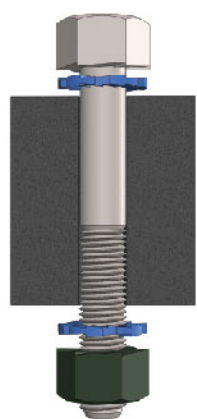
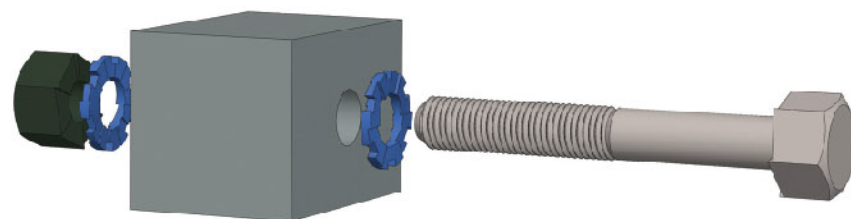


軌道
Railway

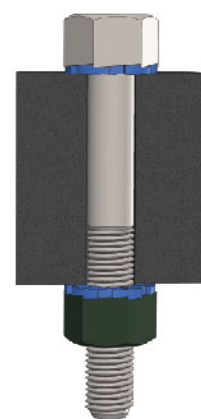


3D ILLUSTRATION

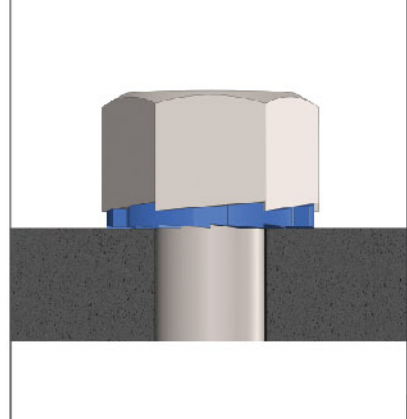
3D產品安裝示意圖



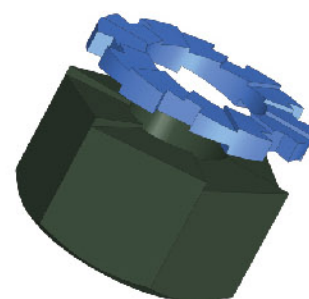
安裝前
Before



安裝中
After



安裝後
Close-up



螺帽 / 華司示意圖
Nut / Washer Diagram

